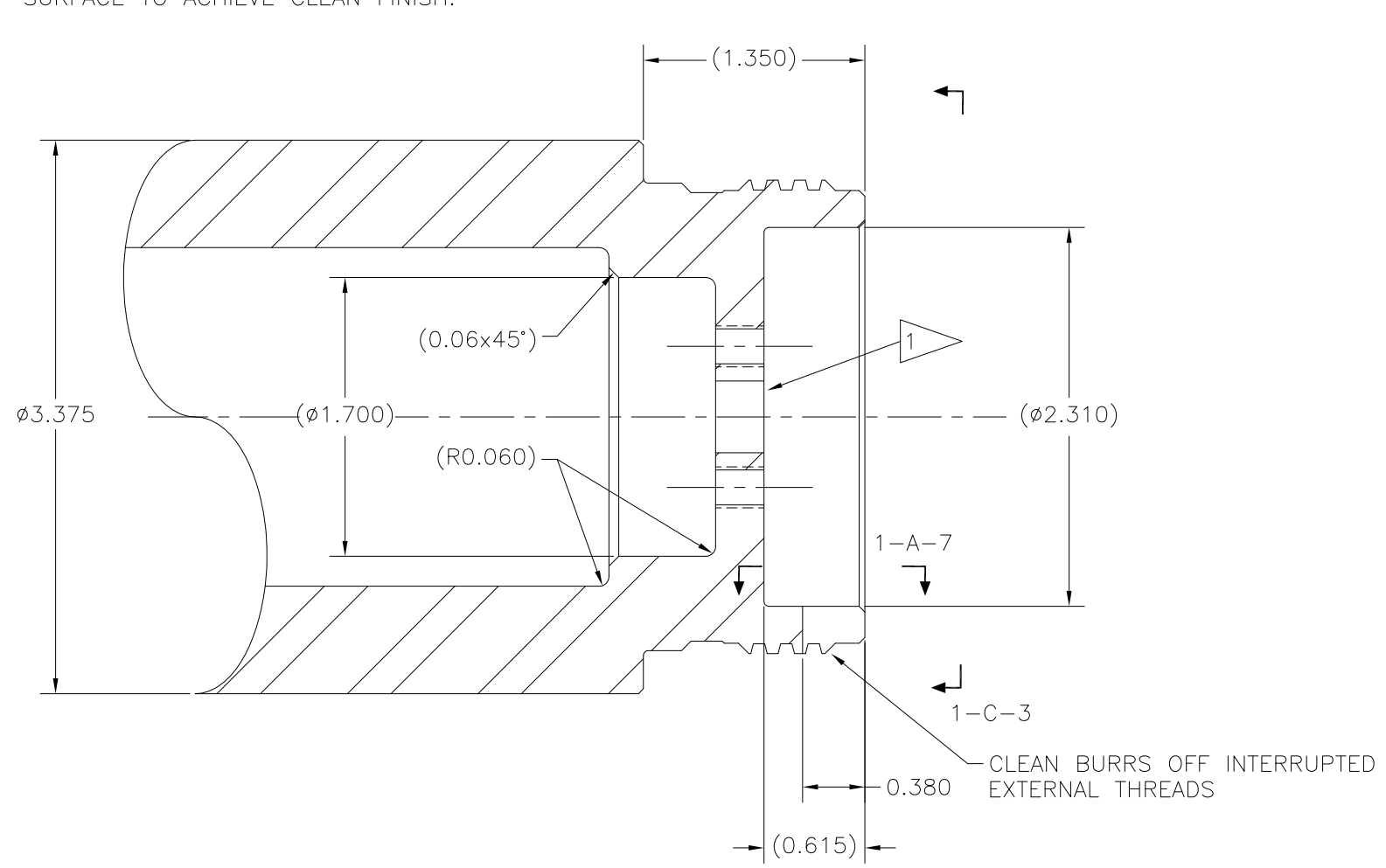


REVISIONS				
NO	DESCRIPTION	DATE	BY	APR/DATE
0	ISSUED FOR MANUFACTURE	2/21/11		

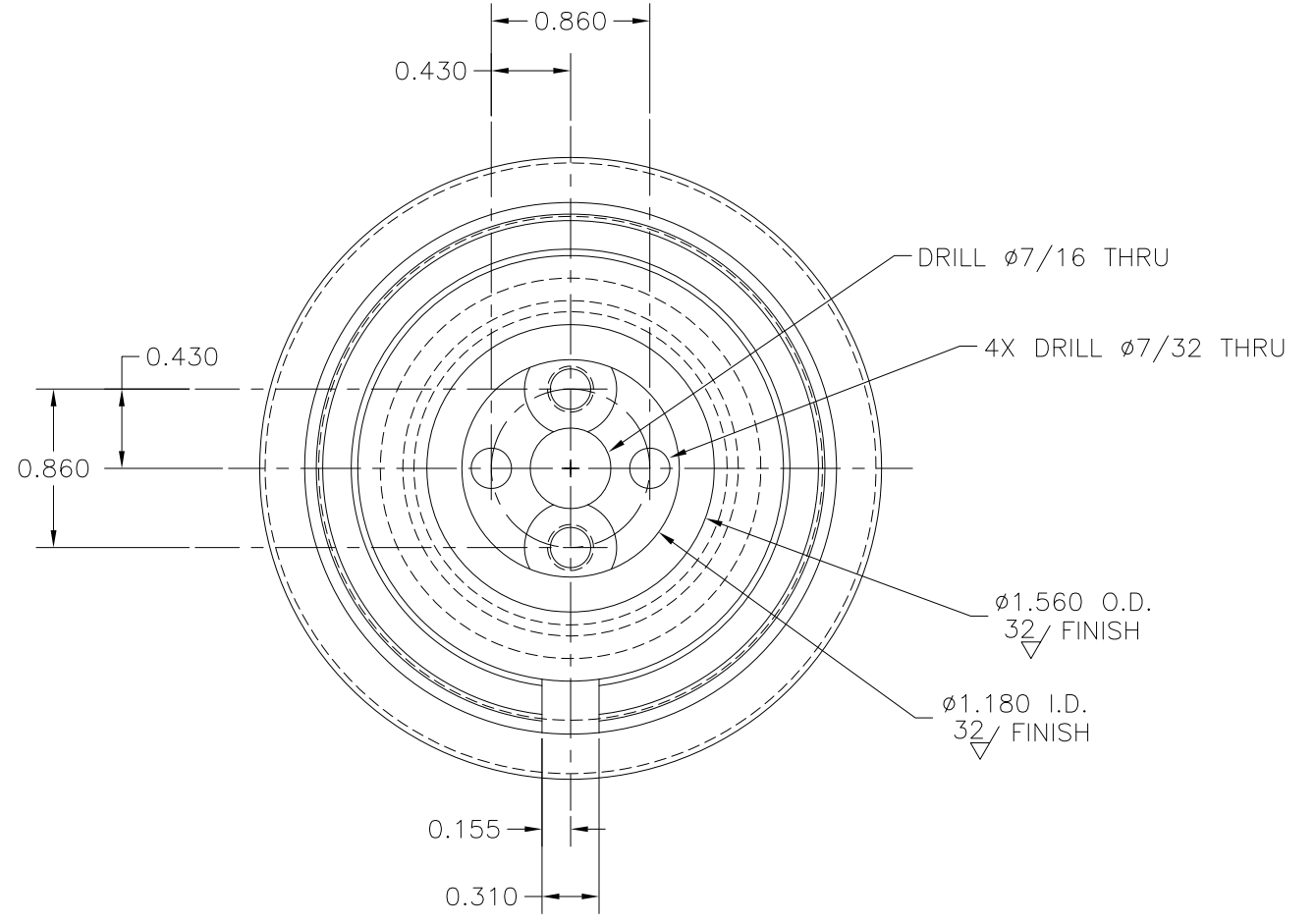
NOTES:

1 CLEAN-UP BOTTOM OF LOWER BULKHEAD, REMOVE ALL EPOXY, REMOVE SCREW AND SMALL BULKHEAD CONNECTOR (MAY BE DESTROYED). SURFACE FINISH 32 RMS. OK TO REMOVE 0.002/0.003 INCHES OF SURFACE TO ACHIEVE CLEAN FINISH.

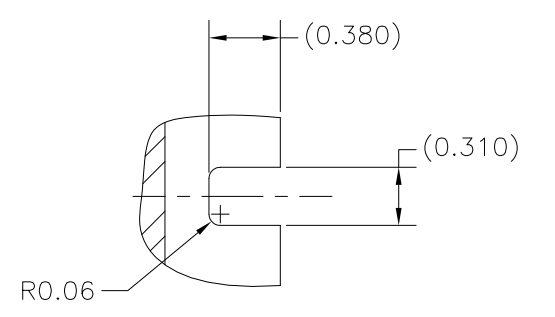


SECTION 1-C-7
MODIFICATION TO EXISTING PRESSURE CASE
REF. DWG. ERS-022 FOR DIMENSIONS
NOT SHOWN

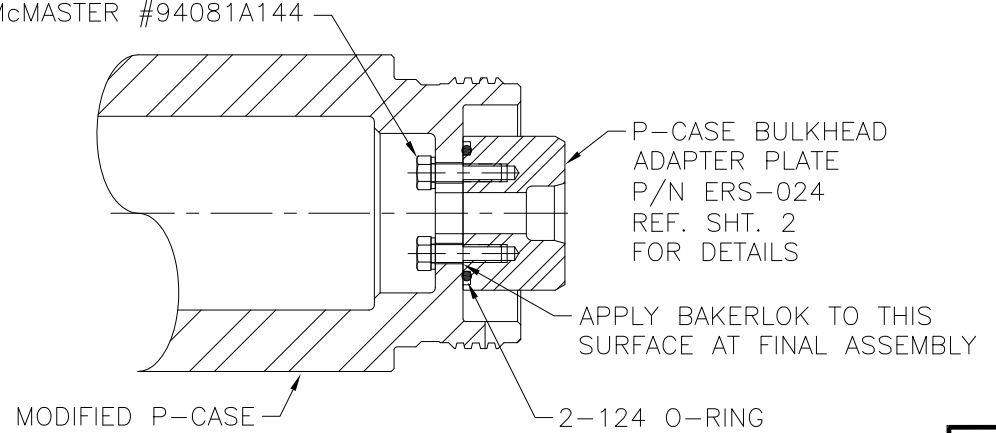
4X #10-24UNC-2A x 3/4" LG.
W/ SS LOCK WASHER
HX. CAP SCREW
McMASTER #94081A144



VIEW 1-C-3
REF. 1-B-5



SECTION 1-A-7
REF. 1-C-5



SECTION 1-A-5
PRESSURE CASE - ADAPTER ASSEMBLY
REF. SHT. 2 FOR ADAPTER DETAILS

TOLERANCES: UNLESS OTHERWISE SPECIFIED 0.X ± 0.030 0.XX ± 0.010 0.XXX ± 0.005 ANGLES ± 1/2° BREAK EDGES 0.015 x 45° MIN. FINISH 125 [0.010]A ALL DIMS ARE IN INCHES, UNLESS NOTED OTHERWISE.	PROPRIETARY NOTICE THIS DRAWING AND THE INFORMATION IT CONTAINS ARE CONSIDERED CONFIDENTIAL, AND MAY NOT BE REPRODUCED, COPIED OR USED, IN PART OR IN WHOLE, WITHOUT PRIOR WRITTEN CONSENT.	Integrated Ocean Drilling Program TEXAS A&M UNIVERSITY 1000 DISCOVERY DRIVE COLLEGE STATION, TX 77845	
		SHEET 1 OF 2 SCALE FULL BY MM DATE 2/21/11	TITLE ERS V.2 RETROFIT - X/O & PRESSURE CASE, ERS TO 31 PIN CONNECTOR SYSTEM ERS v.2 APPROVED DH CHECKED DH